



*Holy Happydays*

**MERRY CHRISTMAS**

# A note from Tim

People ask, "How can I get to know people?" and "How can I be a part?" You can find several places to connect here at Bethel West Pasco. In each group you will find people with a desire to know God and to serve him and serve each other. It is a part of making disciples!

- Small Groups** ::: gaining better understanding of God's word while building authentic, Christ-focused relationships. These groups meet throughout Pasco during the week.
- Tech Team** ::: providing the sights and sounds of the morning. You can even be digitally challenged and still join the team, there's a place for everyone.
- Hospitality** ::: serving and caring for people by providing coffee and sweet eats on Sunday morning. You can even serve by cooking your favorite recipe.
- Facility Team** ::: preparing the facility for church each Sunday morning, sometimes there are even donuts...but there is always great conversation and laughs along the way.
- Ushers** ::: caring for the church family on Sunday morning and meeting any needs our guests might have.
- Hosts** ::: warm handshakes and a great smile remind people they are appreciated and welcome!
- Children's Ministry** ::: communicating God's love with a lot of fun and energy!



**Interested?**

Ask questions or join a group at [tim.phillips@bethel-church.org](mailto:tim.phillips@bethel-church.org)

# DiscoverZone

Ice Skating @ TRAC Pavillion

Sunday, Dec 6 @ 3:30-6p

Cost: TBD

For kids ages kindergarten through fifth grade and their friends and family. Make sure you have a current participation agreement on file. You can find the form on our the children's page at [www.bethel-church.org](http://www.bethel-church.org).

## Holiday Outreach

All of December we will collect donations to purchase Wonder-Fun Activity books for the Angel Tree ministry. Watch for our special collection box.

## Mission Journals

Parents, your children are bringing home "Mission Journals" each week. This is where you will find their memory verses. Please take time each week to work with your child(ren) and help them learn their verse. When they come back to church on Sunday and recite the verse to their teacher they will get a treat.

Take home games reinforce the weekly lesson and it is fun for the kids. When they bring these back they get the chance to be in the drawing for the "prize box"!

## Servers

We still need DiscoverZone servers:

- *Nursery shepherd*
- *Nursery junior helper*
- *Pre-K shepherd*
- *Pre-K junior helpers*
- *K-1-2 shepherds*

## Questions:

Contact our Children's Ministry Coordinator at [sarah.elliott@bethel-church.org](mailto:sarah.elliott@bethel-church.org) or 492-4296/cell 360-791-4145.



# Youth

## November

- High School After Church Lunch | Su, Nov 15 @ 11a
- All Youth Tri-City American's Game | Tu, Nov 17
- No Youth Meeting | Sun, Nov 29

## December

- High School After Church Lunch | Su, Dec 20 @ 11a
- All Youth Christmas Party | Su, Dec 20 @ 6:30p
- No Youth Meeting | Su, Dec 27

## Weekly Sunday Meetings @ 6:30p

- Middle School | Nov 1 & 15 | Dec 6
- High School | Nov 8 & 22 | Dec 13

## Winter Retreat Dates

- Middle School | Feb 12-14
- High School | Mar 5-7

## All Youth Tri City American's Game

Date: Tuesday, No 17

Where: Meet at Fairchild Cinemas @ 6:15p

Cost: \$10 Pre-pay at the resource table or at youth group by Sun, Nov 8.

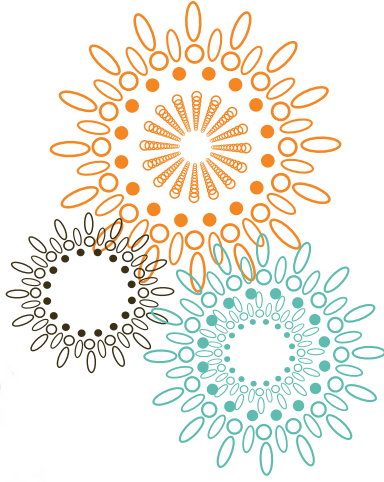
Questions? Contact adam.phillips@bethel-church.org.

# Resonate

Sunday, Dec 13 | 11:30a @ the Waffle House  
(9103 Angus Dr, Pasco)

Ok, it's not actually a Waffle House, it is at Jessica Nim's house. But she will give us a waffle experience you won't soon forget!

More info to come. If you want to get in early on the info, email [tim.phillips@bethel-church.org](mailto:tim.phillips@bethel-church.org).



## Women

West Pasco Girlz...on a  
Christmas Mission

Wed, Dec 2 @ 6p

Janice Walker's home: 4916 Malaga Dr, Pasco

Bring two 12"x12" squares of fleece, sewing scissors and a Christmas treat to share.

There will be an opportunity for giving through Rabuna Fi with Far Reaching Ministries. Check out their website at [rabunafi.org](http://rabunafi.org).

Questions? Contact [karen.phillips@bethel-church.org](mailto:karen.phillips@bethel-church.org) or Kellie Stigge, [fishk\\_15@hotmail.com](mailto:fishk_15@hotmail.com).

## Women's Bible Study

New session begins in January. Watch for more info.

## Men

### Men's Breakfast

Sat, Dec 12 @7:30a

Richland Campus Fellowship Hall

Join men from Bethel and other area churches for a hearty breakfast and an inspirational talk by Vince D'Acchirole.

Vince is a nationally known author and speaker and is the founder of On Target Ministries.

## Mission Trip

A few weeks ago we were introduced to a team of five guys headed to Africa to serve aboard the Mercy Ship docked in Contonou, Benin. They will leave November 14 and return on the 24th. Pray God would use them to communicate the hope of Christ to the people they meet as well as safety on their trip.



*Pictured: Jack Lochridge, George Frank, Wayne Stigge, Tim Phillips, Derek Alexander*

# Holiday Serving Opportunities



## Jubilee Youth Ranch

Jubilee Youth Ranch provides a Christ-centered community where youth can find a new beginning! Jubilee works to restore wholeness to young men with broken lives, broken relationships with God, self and others.

Purchase and wrap each item and drop off in the Jubilee Youth Ranch collection bin at the Resource Table on Sundays. Please attach a note to each item with a description of the wrapped item, i.e. M-white t-shirt, etc.

- White t-shirts (all sizes)
- White tube socks
- Dark blue sweat shirts (all sizes)
- Underwear (all sizes)
- Shaving kits
- Board games
- Sports equipment (basketballs, footballs, soccer balls, etc)

Contact *Kathy Allison*: 946-7067.

## Adopt-a-Family

Many local families cannot afford holiday meals or Christmas gifts for their children. They may also be in need of essential clothing, baby supplies, school supplies, or household items. This year we will be assisting families of two elementary schools near the Fairchild Cinema (Maya Angelou and McGee) for the season. Selecting one family will give you an opportunity to assist them for Thanksgiving and Christmas.

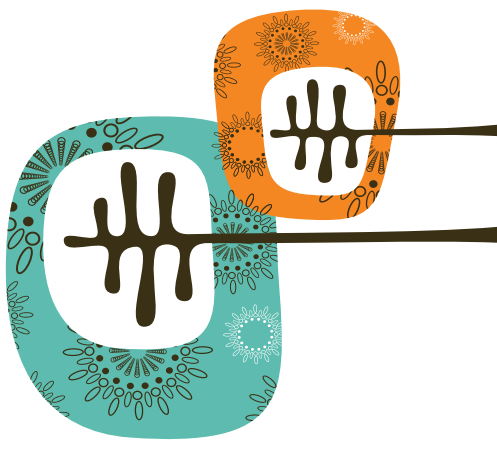
Bethel individuals or small groups may adopt a family and:

- provide Thanksgiving meal
- provide a Christmas meal and simple Christmas gifts for the children.

Stop by the Resource Table to adopt a family.

Contact *Mary Sanders* :

460-8763



## Operation Christmas Child

Samaritan's Purse provides shoeboxes of gifts to impoverished children around the world, many of whom have never owned a toy or received a gift of any kind. Pick up a box (or you may use your own shoebox) and information at the Resource Table in the lobby. Fill with your gift items and return to the Resource Table on Nov 8 or 15.

Contact Rod and Dawn Hansen: 546-2548



## Angel Tree

For children with one or both parents in jail or prison, Christmas is often a lonely time filled with shame, separation, and sadness. We have the opportunity to provide for their needs and Christmas gifts. Select a family at the Resource Table in the lobby.  
Contact Char Frank: 547-9727

## DiscoverZone Angel Tree

Children will be collecting donations to purchase Wonder-Fun Activity books for the children of the Angel Tree ministry. More information will be sent home with your child on Nov 8.



# Christmas Eve Services

There will be two Christmas Eve services at the Richland Campus 6 and 7:30p.  
Watch for more details.